



BTI SCAN® 4



ORAL  
IMPLANTOLOGY  
PLANNING  
**SOFTWARE**



## BTI SCAN® 4

DIAGNOSTIC AND PLANNING  
SUPPORT TOOL FOR IMPLANTOLOGY  
AND ORAL SURGERY

## THE START OF SUCCESSFUL TREATMENT

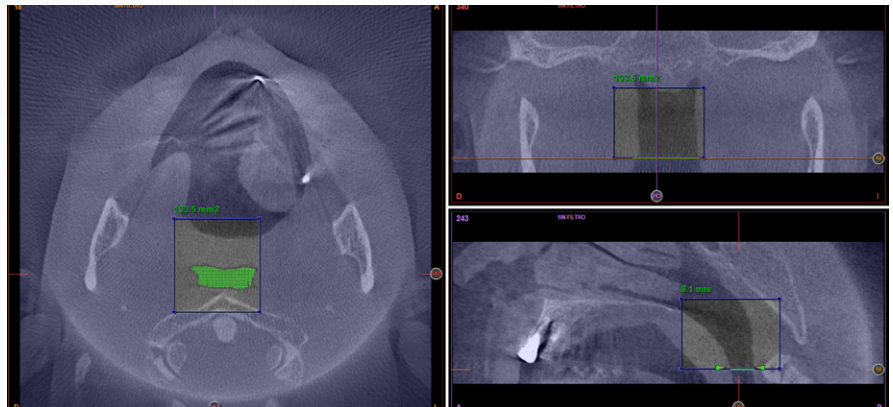
BTI Scan® 4 software was designed with the aim of helping you to achieve an efficient diagnosis and digital planning of treatments to ensure greater quality and predictability of implantology surgeries.

This tool will help your patients visualise and understand the treatment plan through the 3D simulation and rendering offered by this system, and will help you reach an accurate and safe diagnosis that will enable you to decide on the length, width and location of both the implants and the prosthetic components, as well as of the teeth.

# NEW FEATURES

## MINIMUM AREA OF APNOEA

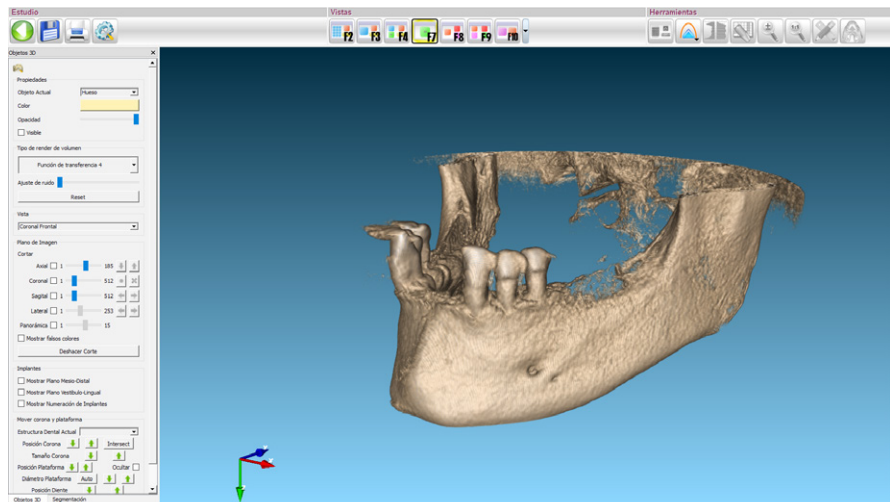
The software allows the measurement and quantification of volumes, which can have multiple applications such as quantifying airway volume and aiding in the prediction of possible obstructive sleep apnoea.



## NEW 3D VISUALISATION

It offers improved visualisation in the 3D rendering option by integrating the transference functions and providing maximum realism to the user's experience.

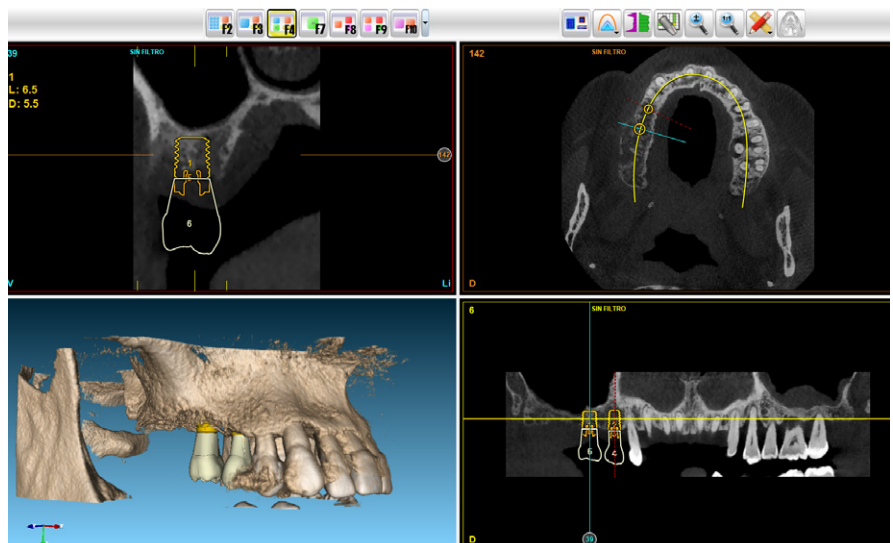
**\*It renders the data obtained from any CBCT.**



## VIRTUAL DESIGN OF THE PROSTHESIS

With this tool you will be able to complete your plans from start to finish, appropriately choosing the prosthetic components derived from transepithelial abutments such as Multi-IM® and Unit®.

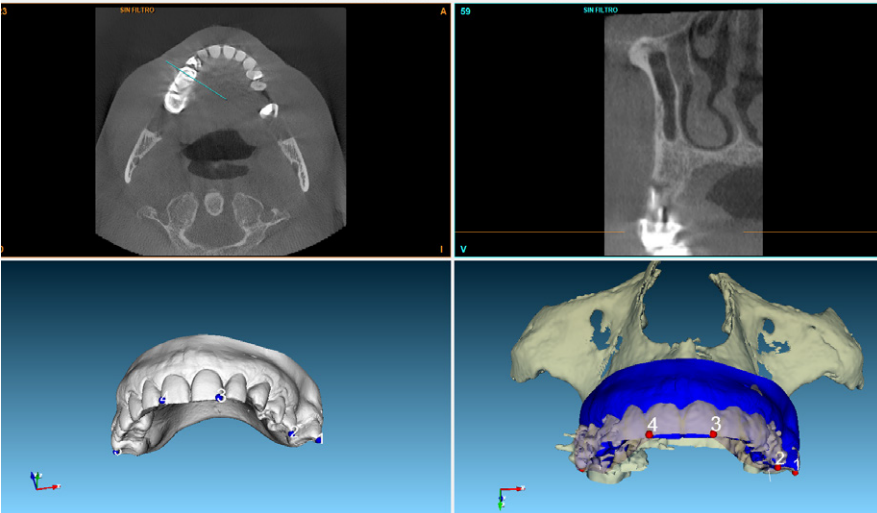
BTI SCAN® 4 allows for both placing and rotating the complete implant from different perspectives.





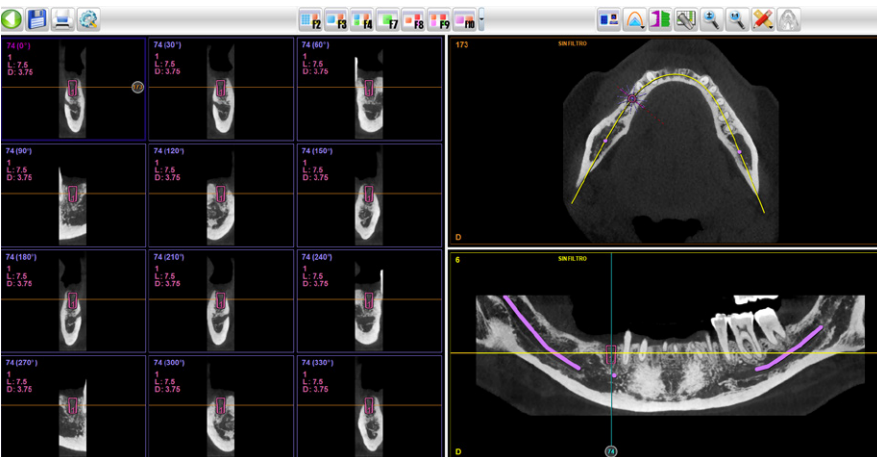
## FREE-HAND DRAWING OF THE DENTAL ARCH CURVE

A new way to generate the dental arch curve by clicking points. Simple and accurate.



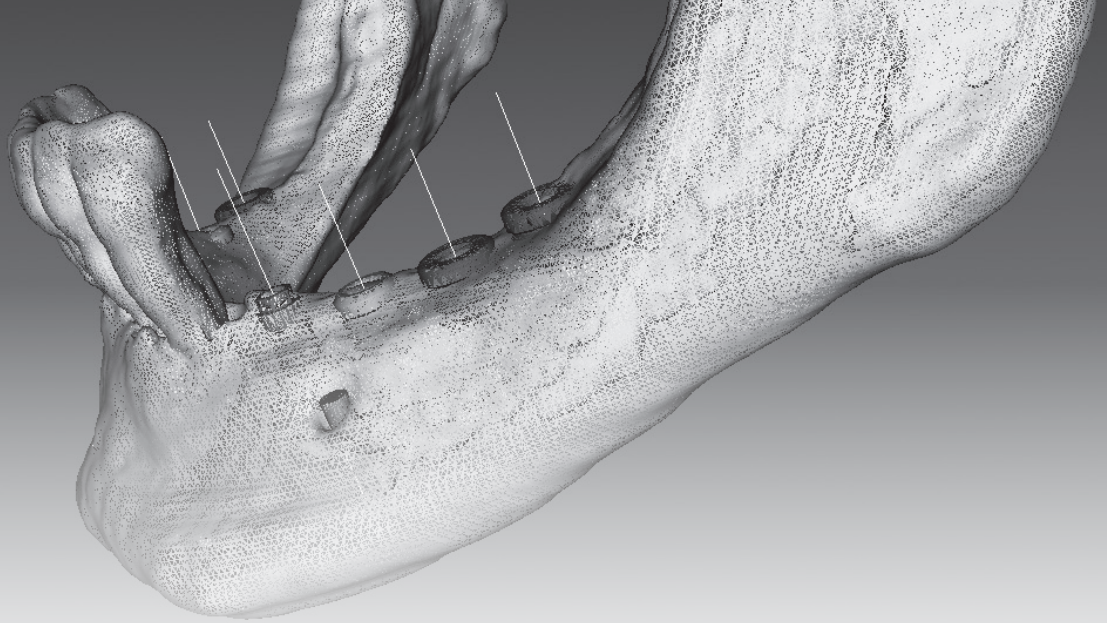
## REGISTRATION OF THE PLASTER MODEL

Thanks to this feature, the user can align the plaster model imported in STL format against the 3D generated in the scanner, thus achieving an improved placement of the implants.



## RADIAL VIEW

This new perspective will result in gains in predictability and knowledge about the tissue, as it allows you to visualise the living environment surrounding the placed or still to be placed implant.



# WHAT ADVANTAGES DOES IT OFFER?

## **SAFETY AND SUCCESS DURING SURGERY**

BTI SCAN® 4 enables you to determine the bone density of each point of the alveolar bone, both outside and within the implants to be placed. It also aids the complete evaluation of the mouth cavity and its anatomical structures, including those at risk, such as the foramen of the inferior dental nerve, marking it so as to visually highlight it.

## **MORE INFORMATION AND REASSURANCE FOR YOUR PATIENTS**

The BTI Scan® 4 technology will help your patients understand the treatment plan through the 3D simulation and visualisation offered by this system.

## **COMFORTABLE AND SIMPLE**

This is a simple and intuitive programme. All the information is within quick and easy reach. Simple network or single-user installation.





**BTI Commercial**

San Antonio, 15 - 5º  
01005 Vitoria-Gasteiz  
(Álava) · Spain  
Tel.: +34 945 140 024  
Fax: +34 945 135 203  
[pedidos@bticomercial.com](mailto:pedidos@bticomercial.com)

**B.T.I.**

**Biotechnology Institute S.L.**

Parque Tecnológico de Álava  
Leonardo da Vinci, 14  
01510 Miñano (Álava) Spain  
[bti.implantes@bti-implant.es](mailto:bti.implantes@bti-implant.es)

**Subsidiaries**

**GERMANY**

Tel. +49 (0) 7231 428060  
Fax +49 (0) 7231 4280615  
[info@bti-implant.de](mailto:info@bti-implant.de)

**PORTUGAL**

Tel: (351) 22 120 1373  
Fax: (351) 22 120 1311  
[bti.portugal@bticomercial.com](mailto:bti.portugal@bticomercial.com)

**FRANCE**

Tel: (33) 556 18 11 18  
[info@bti-implant.fr](mailto:info@bti-implant.fr)

**UK**

Tel: +44 (0) 2039 661873  
[customerservice@bti-implant.co.uk](mailto:customerservice@bti-implant.co.uk)

**ITALY**

Tel.: (39) 0270605067  
[info@bti-implant.it](mailto:info@bti-implant.it)

**USA**

Cell: 610 209 6040  
Office: 866 646 4067  
[info@bti-implant.us](mailto:info@bti-implant.us)

**MEXICO**

Tel: (52) 55 52502964  
Fax: (52) 55 55319327  
[bti.mexico@bti-implant.com](mailto:bti.mexico@bti-implant.com)

[www.bti-biotechnologyinstitute.com](http://www.bti-biotechnologyinstitute.com)

NOTE: consult your distributor for the availability of the product in the different markets.



**BTI APP**  
NEW PRODUCTS

iPhone/smartphone version  
iPad/tablet version (**exclusive content for clients**)