

SIRONA[®] BIOABUTMENTS



DIRECT TO IMPLANT RESTORATION

NON ENGAGING

	Art. - Nr.	Gingival height
4,5 mm	INPSIER1	1 mm
	INPSIER2	2 mm
	INPSIER3	3 mm

Screw: **INTTUHCR**

ENGAGING

	Art. - Nr.	Gingival height
4,5 mm	INPSIE1	1 mm
	INPSIE2	2 mm
	INPSIE3	3 mm

Screw: **INTTUHCR**

NON ENGAGING

	Art. - Nr.	Gingival height
4,5 mm	INPSIUR1	1 mm
	INPSIUR2	2 mm
	INPSIUR3	3 mm

Screw: **INTTUHCR**

ENGAGING

	Art. - Nr.	Gingival height
4,5 mm	INPSIUL1	1 mm
	INPSIUL2	2 mm
	INPSIUL3	3 mm

Screw: **INTTUHCR**

NOTE:

Direct-to-implant components are supplied together with the specific screw.

INDIRECT RESTORATION WITH TRANSEPITHELIAL

UNIT[®]

	Art. - Nr.	Gingival height
4,5 mm	PSUPE	0,5 mm
		3,5

Screw: **TTMIR**

	Art. - Nr.	Gingival height
4,5 mm	PSUPU	0,5 mm
		4,1

Screw: **TTMIR**

	Art. - Nr.	Gingival height
4,5 mm	PSUPA	2 mm
		5,5

Screw: **TTMIUPA**

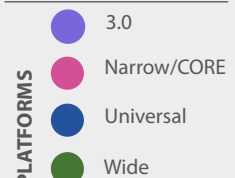
MULTI-IM[®]

	Art. - Nr.	Gingival height
4,5 mm	PSMIPU	2 mm
		4,1

Screw: **TTMIR**

NOTE:

Screws are sold separately

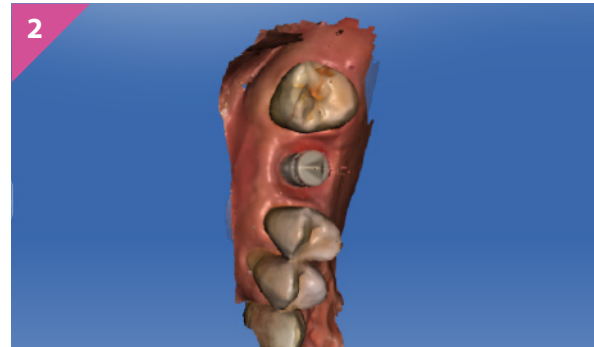


STEP by STEP

CATTI_42_(EN)_V.06_07/2023



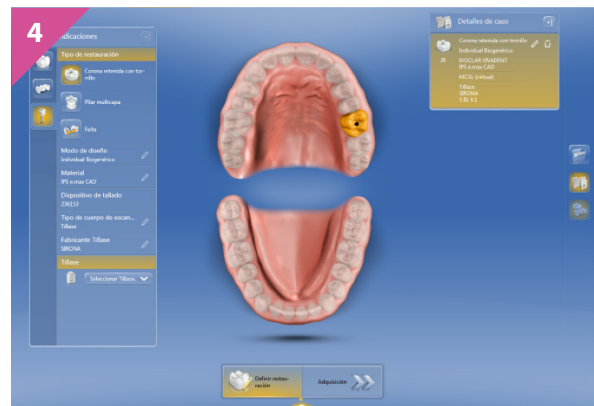
Position the Body Scan on the Ti Base.



Virtual visualization of body scan upon the fit.



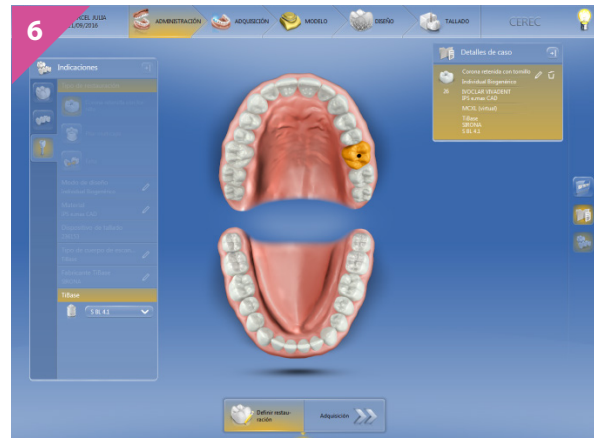
Choosing the restoration to make.



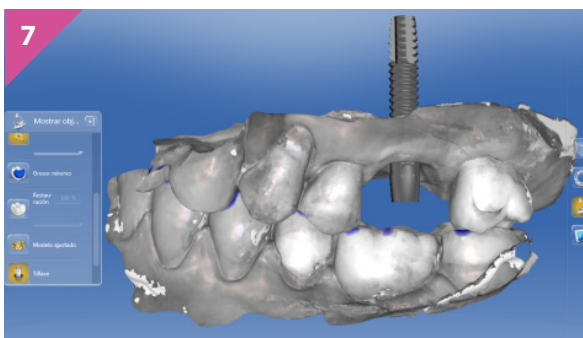
Choosing the Ti Base.



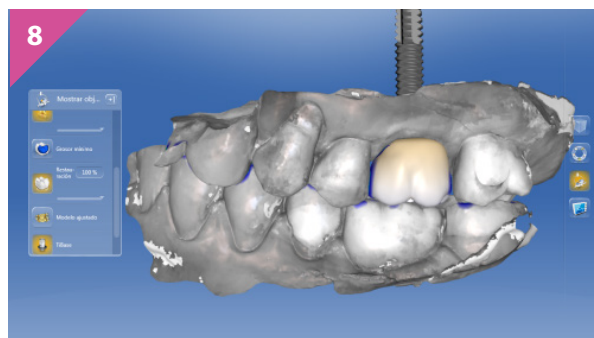
Among the Ti base options, choose SBL41.



Details of the finished case.



Virtual visualization of the scanning.



Virtual visualization of the final design.