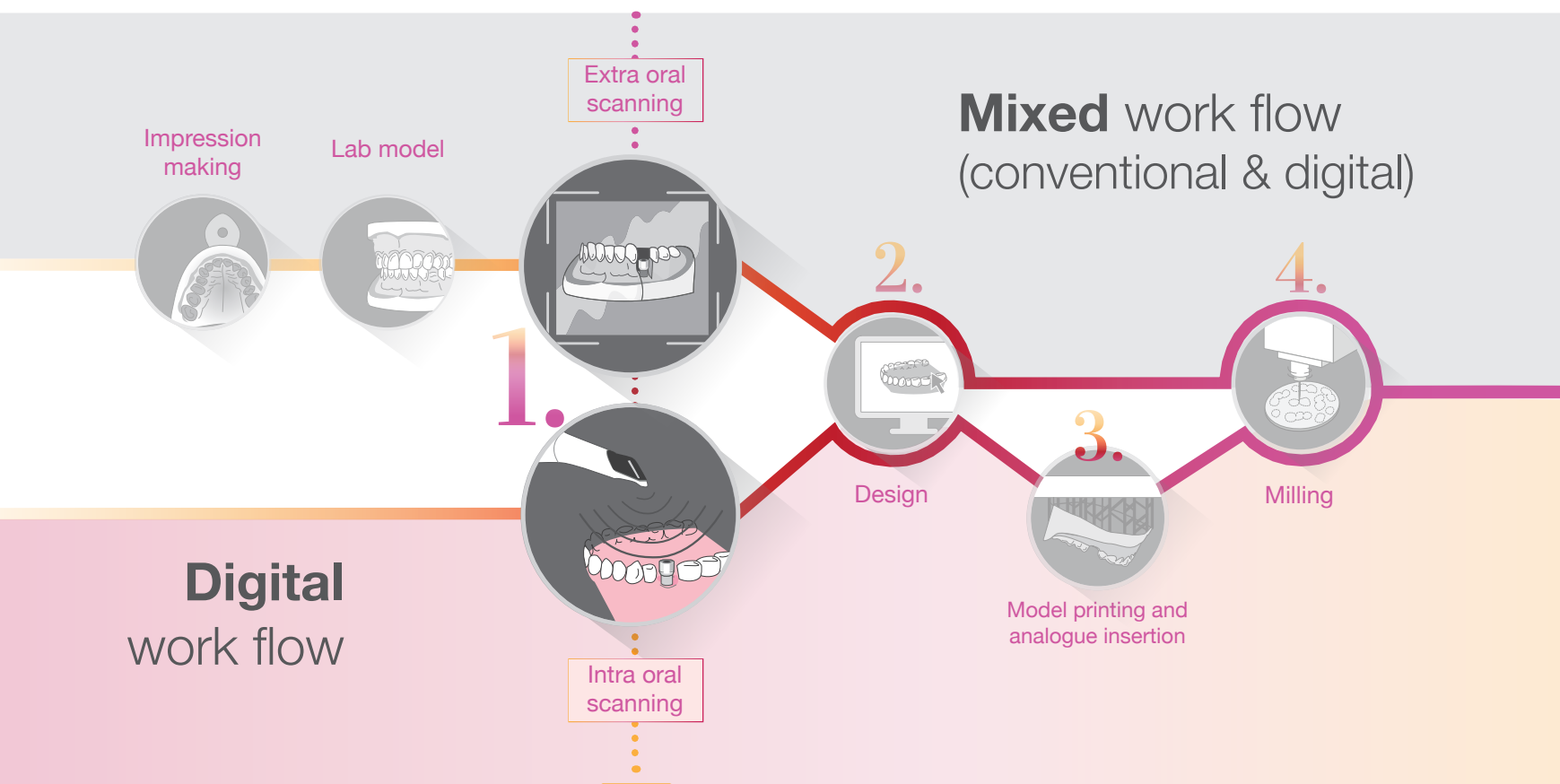


SOLUTIONS for CAD-CAM RESTORATIONS



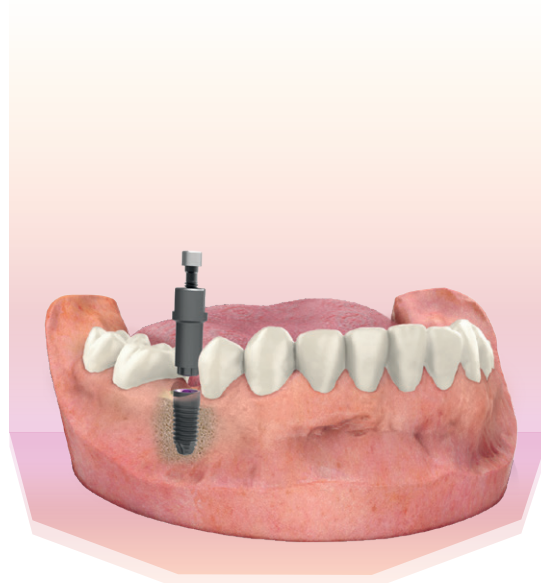
SCAN BODIES & DIGITAL ANALOGUES



DIRECT TO IMPLANT RESTORATION

Scan Body	Retaining screw
SBII3	INTTUHCR
SBIIIE	INTTUH
SBIIU	INTTUH
SBIIA1*	INTTUH

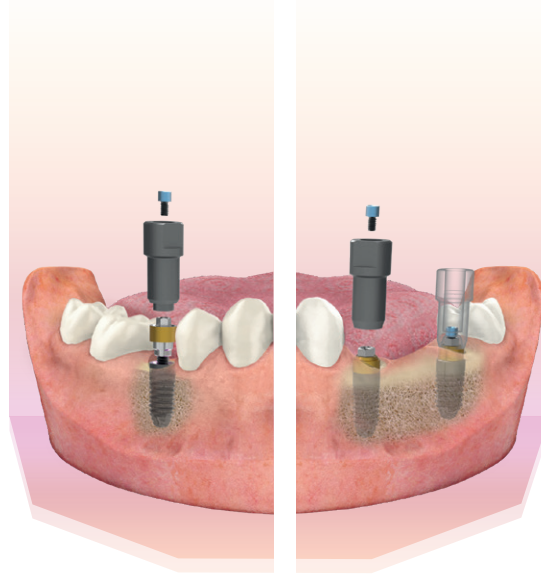
*Screw not included



Scan Body	Retaining screw
SBIIET	TTTH
SBIEU	TTUH
SBIEA1*	TTUH

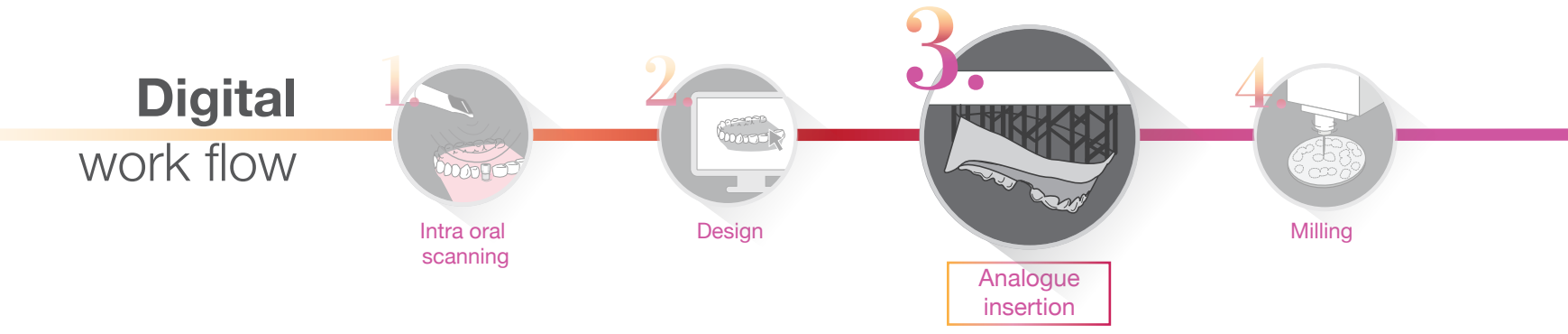
INDIRECT RESTORATION WITH TRANSEPITHELIAL

Scan Body	Retaining screw
SBIRMIUPE	TTMIR
SBIRMIUPU	TTMIR
SBIRMIUPA	TTMIUPA



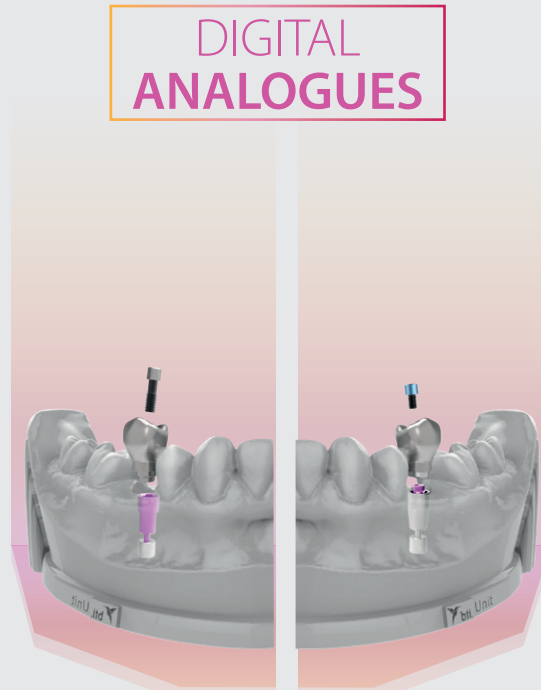
Scan Body	Retaining screw
SBIRMIPE	TTMIR
SBIRMIPU	TTMIR
SBIRMIPIA	TTMIR

Scan Body	Retaining screw
SBIRMUA	TTMIR



DIRECT TO IMPLANT RESTORATION

Scan Body	Retaining screw
INRDI3	—
INRDIIE	RIDIE
INRDIU	RIDIU
INRDIIA	RIDIA



INDIRECT RESTORATION WITH TRANSEPITHELIAL

UNIT®	MULTI-IM® Straight	MULTI-IM® Angled
RDIMIUE	RDIMIEPE	—
RDIMIUPU	RDIMIEU	RDIMIEUA
RDIMIUPA	RDIMIA	—

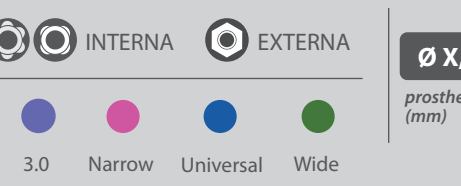
For the digitalisation of the patient's mouth, BTI has developed a range of scan bodies to be used with both lab and intraoral scanners, that enable a high precision transfer of the dentition geometry and implants position to the CAD software. There is available as well, a series of analogues for the 3D printed models that enable the digital workflow finish.

- Height 10mm
- 2 sides

Tightening torque for screws: 10 Ncm
 The scan bodies and analogue libraries are available for Exocad, 3shape and Dental Wings software.
 The analogues come along with cover, required for their attachment into the model.

GENERAL INFORMATION

The scan bodies are provided with with the corresponding screws.



STERILISATION IN AUTOCLAVE

1. Introduce the scan body, into sterilization pouches with sterilization indicator and seal the bag as specified by the supplier. Ensure that the pack is large enough to contain the tool without stressing the packaging.
IMPORTANT: Only use wrapping materials and systems (sterile barrier systems) that comply with the DIN EN ISO 11607-1 standard. The correct application of suitable wrapping is critical for the success of the sterilization.
2. Introduce the sterilization pouches into a pre-vacuum autoclave (for example: CELITRON MEDICAL TECHNOLOGIES, STING 11) with paper up or sideways. Be sure not to exceed

- the maximum load of the autoclave specified by the supplier and not to stack up bags.
3. Sterilize at 134°C + 5°C / (Pressure under autoclave supplier specification, for example: 2 bar) for 6 minutes. The changing color of the indicator in the bag shows if the sterilization process has been carried out correctly.
4. Be sure the sterilization requirements (pressure, temperature and time) are the ones described in this instruction for use.
5. After completing the sterilization cycle, let dry and cool bags inside the autoclave for at least 20 minutes, before

removing and storing them.
IMPORTANT: Only use steam sterilizers that comply with the EN 13060 standard. Be sure that sterilization program is established according to the temperature, pressure and time indicated. In case of doubt, contact the steam sterilizer supplier.

CAT161 (EN) V.09 02/2025



B.T.I.
 Biotechnology Institute S.L.
 Parque Tecnológico de Álava
 Leonardo da Vinci, 14
 01510 Miñano (Álava) SPAIN
 bti.implantes@bti-implant.es

BTI Comercial
 San Antonio, 15 · 5º
 01005 Vitoria-Gasteiz
 (Álava) · SPAIN
 Tel: +34 945 140 024
 pedidos@bticomercial.com