

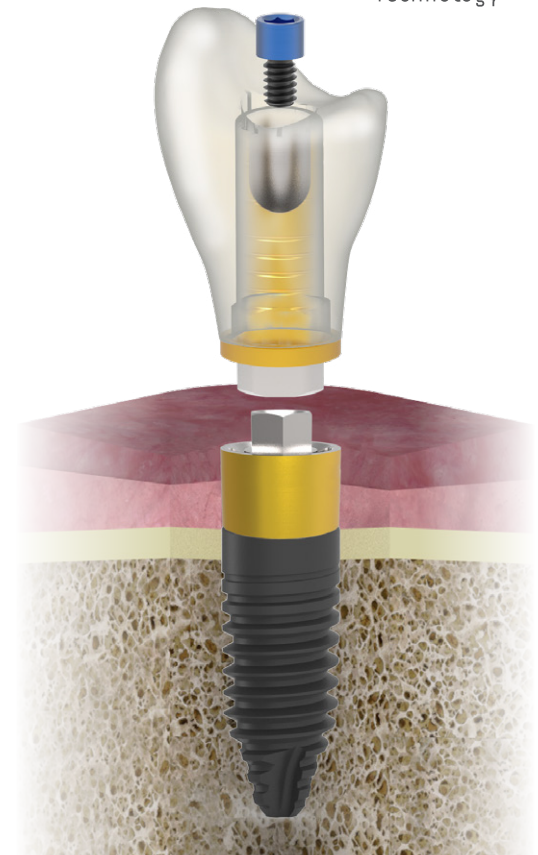
BIOBLOCK[®]

A BIOMECHANICAL
AND BIOLOGICAL
CONCEPT



bti.

Human
Technology



BIOBLOCK®

- The prosthesis is joined to the implant by an intermediate transepithelial, screwed into the implant.
- The surface of each integral component (implant and transepithelial) is adapted specifically to the different tissues it will interact with.

THE BEST CLINICAL DECISION FOR THE PREVENTION OF PERIIMPLANTITIS AND THE SUCCESS OF IMPLANT TREATMENTS.

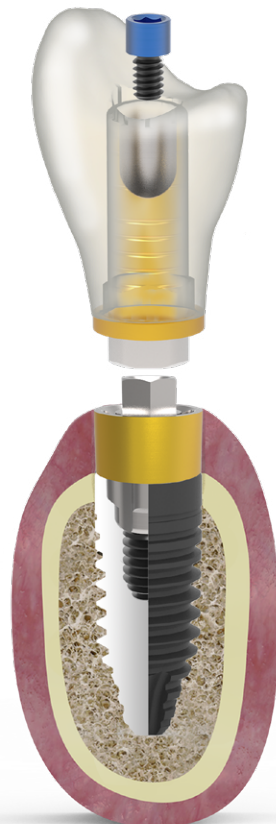
BIOLOGICAL SEAL

The bond between the tissue and the transepithelial is established at the moment it is inserted.

The prosthesis can be removed easily without damaging this junction, as the prosthetic platform is located at the gingival level.

PROSTHETIC VERSATILITY AND REVERSIBILITY

BTI® transepithelials ensure the reversibility of the screw-retained prosthesis, enabling the height to be modified in situations of gingival morphology alterations.



BIOMECHANICAL IMPROVEMENT

By using 2 screws, the Bioblock concept ensures a better distribution of the stress in the joining components, optimising the mechanical behaviour.

*They are screw-retained to the implant at **35 Ncm** and the screw that retains the prosthesis to the transepithelial at **20 Ncm**.*

GUARANTEE OF HERMETIC SEAL

The right design and high-precision machining of the BTI® transepithelials' connection provides a hermetic seal at the implant-platform level and therefore prevents bacterial invasion.

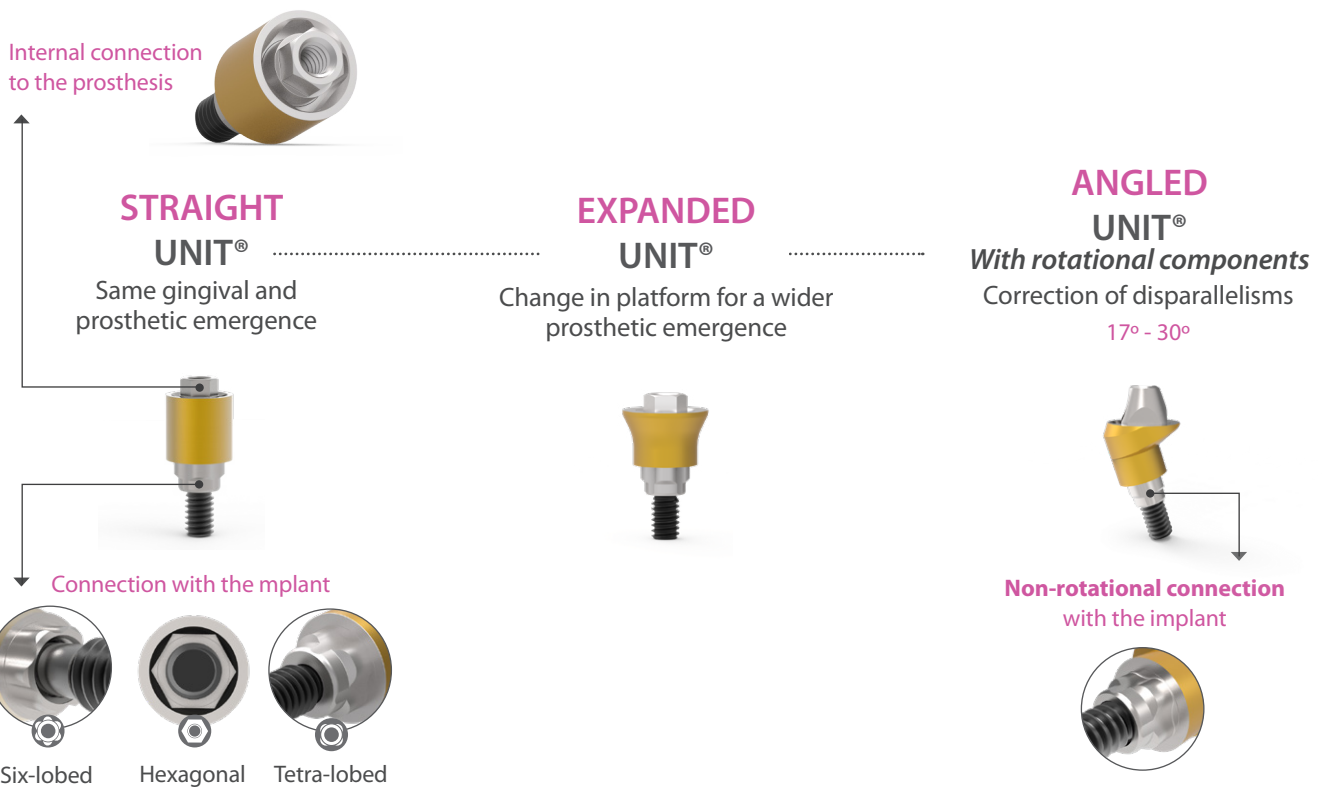
INSTANT STABILITY

The surface topography of the BTI® implant system (triple roughness modified with calcium ions) maximises the initial anchoring of the implant to the bone.

To achieve the biomechanical and biological advantages of the **BIOBLOCK®** concept, BTI® has developed a **wide range of transepithelials**, available for all platforms of its implant system.

UNIT® TRANSEPITHELIAL

SINGLE RESTORATIONS (SCREW-RETAINED) AND COMPONENTS OF CHOICE FOR IMMEDIATE LOADING



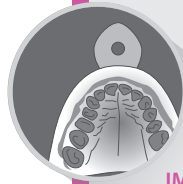
AVAILABILITY PER PLATFORM and CONNECTION

		STRAIGHT	EXPANDED	ANGLED	
		∅ Prosthetic emergence	∅ Prosthetic emergence	17°	30°
Interna	3.0	—	3,5 mm	—	—
Externa	NARROW	3,5 mm	4,1 mm 5,5 mm	5,0 mm	5,0 mm
	UNIVERSAL	4,1 mm	5,5 mm	5,0 mm	5,0 mm
	WIDE	5,5 mm	—	—	—

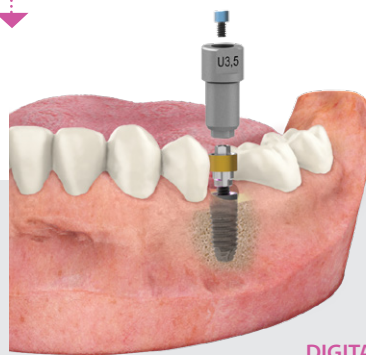
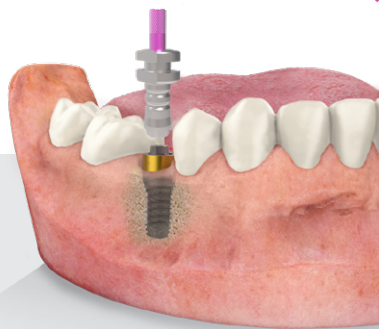
WORKFLOW with UNIT[®]

Conventional workflow

Digital workflow



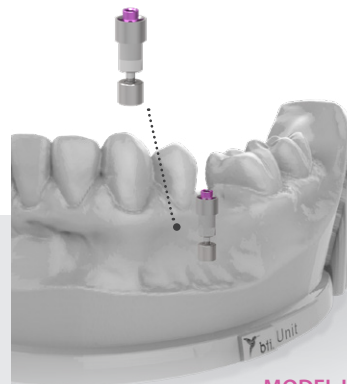
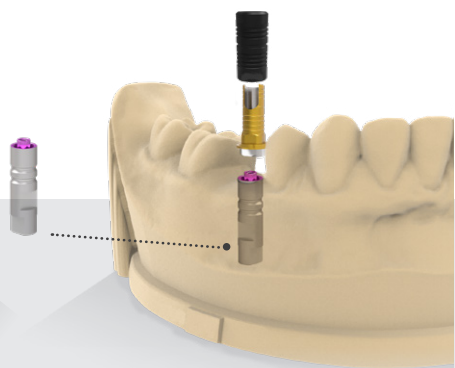
IMPRESSION MAKING



DIGITAL IMPRESSION
TAKING AND SCANNING



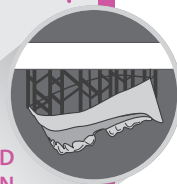
LABORATORY MODEL



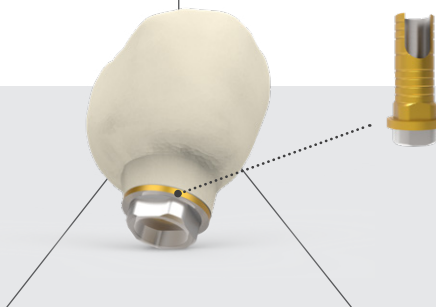
MODEL IMPRESSION AND
ANALOGUE INSERTION



COMPUTER
DESIGN



CONVENTIONAL
MANUFACTURING PROCESS



MACHINING



MULTI-IM[®]

TRANSEPITHELIAL

MULTIPLE RESTORATIONS
(SCREW-RETAINED) AND COMPONENTS
OF CHOICE FOR IMMEDIATE LOADING

Rotating connection
to the prosthesis



STRAIGHT MULTI-IM[®]

Same gingival and
prosthetic emergence



Rotating connection
to the implant



EXPANDED MULTI-IM[®]

Change in platform for a wider
prosthetic emergence



ANGLED MULTI-IM[®]

With rotational components
Correction of disparallelisms
17° - 30°



















Non-rotational connection
with the implant



AVAILABILITY PER PLATFORM and CONNECTION

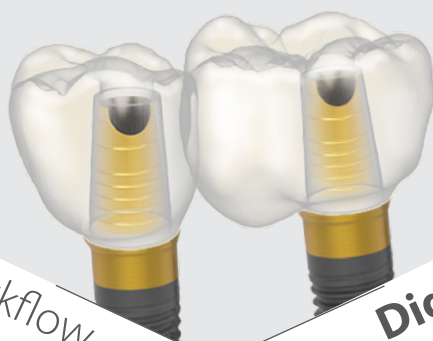


	STRAIGHT		EXPANDED		ANGLED		
	Ø Prosthetic emergence	Connection	Ø Prosthetic emergence	Connection	Ø Prosthetic emergence	17°	30°
3.0	—	—	3,5 mm 4,1 mm	 	—	—	—
NARROW	3,5 mm		4,1 mm 5,5 mm	 	5,0 mm	 	—
UNIVERSAL	4,1 mm	 	5,5 mm	 	5,0 mm	 	
WIDE	5,5 mm	 	—	—	—	—	—

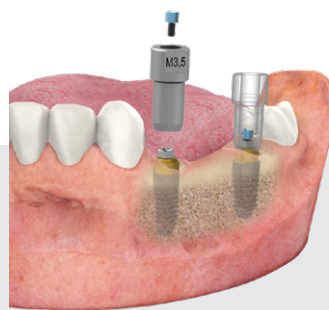
WORKFLOW with MULTI-IM[®]

Conventional workflow

Digital workflow



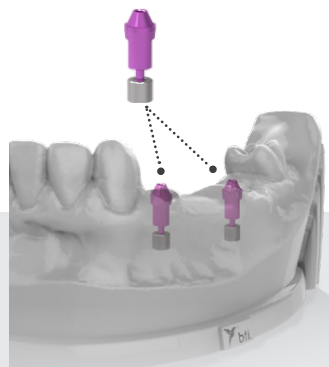
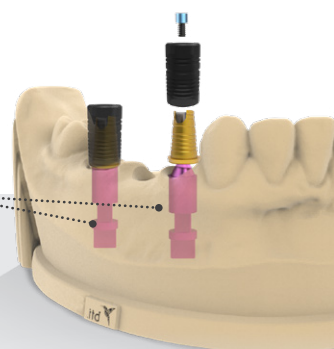
IMPRESSION MAKING



DIGITAL IMPRESSION
TAKING AND SCANNING



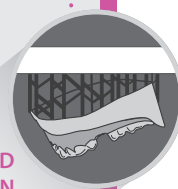
LABORATORY MODEL



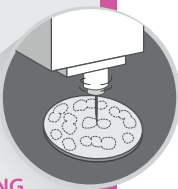
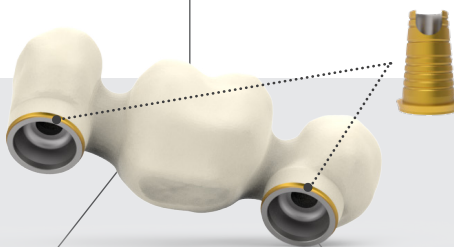
MODEL IMPRESSION AND
ANALOGUE INSERTION



COMPUTER
DESIGN



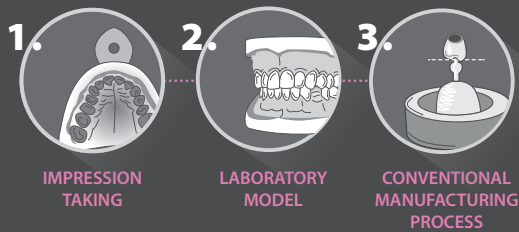
CONVENTIONAL
MANUFACTURING PROCESS



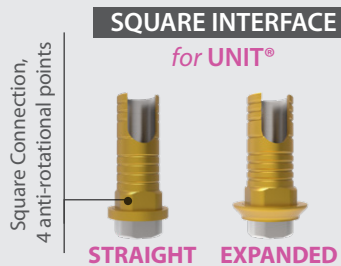
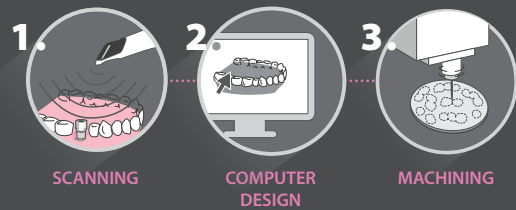
MACHINING

How are restorations made on transepithelial abutments?

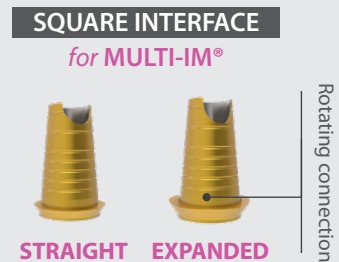
CONVENTIONALLY



USING CAD CAM TECHNOLOGY



With the use of a series of *interfaces* that guarantee a perfect passive fit and maximum retention of the restoration.



The interfaces allow angulations to be corrected in CAD CAM
(STRAIGHT: 0- 15° / EXPANDED: 0 - 30°)

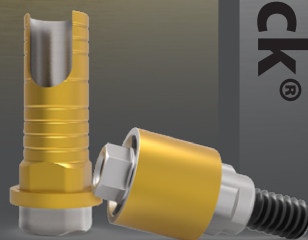
For conventional manufacturing techniques, together with the interfaces, *casting sleeves* should be used.

SURFACE TREATMENTS OF THE COMPONENTS

Ti-Golden®

Ti-Golden® TREATMENT

A titanium nitriding treatment that gives biological and aesthetic advantages to the restoration.



Ti-Black®

Ti-Black® TREATMENT

A tungsten carbide treatment that decreases the friction coefficient and improves the glide of the screw, giving it the same properties as gold in terms of preload and resistance to fatigue.



BTI Comercial

San Antonio, 15 · 5º
01005 Vitoria-Gasteiz
(Álava) · ESPAÑA
Tel: +34 945 140 024
Fax: +34 945 135 203
pedidos@bticomercial.com

BTI

Biotechnology Institute S.L.

Parque Tecnológico de Álava
Leonardo da Vinci, 14
01510 Miñano (Álava) España
bti.implantes@bti-implant.es

Subsidiaries

GERMANY

Tel.: +49 7231 428060
Fax: +49 7231 4280615
info@bti-implant.de

FRANCE

Tel: +33 (5) 54530209
serviceclient@bti-implant.fr

ITALY

Tel.: +39 0270605067
info@bti-implant.it

MEXICO

Tel: (52) 55 52502964
Fax: (52) 55 55319327
bti.mexico@bti-implant.com

PORTUGAL

Tel: (351) 22 120 1373
Fax: (351) 22 120 1311
bti.portugal@bticomercial.com

UK

Tel: +44 (0) 2039 661873
customerservice@bti-implant.co.uk

USA

Tel.: +1 215 646-4067
info@bti-implant.us

www.bti-biotechnologyinstitute.com

NOTE: consult your distributor for the availability of the product in the different markets.