

prgf-endoret®

Endogenous Regenerative Technology

ENDORET® KITS · DENTAL



COMPONENTS OF PRGF-ENDORET® SYSTEM

PRGF-ENDORET® technology is based on a simple, efficiency proven protocol for obtaining plasma rich in growth factors. To obtain ENDORET's different therapeutic formulations, specific components are required: the System V centrifuge, the Plasmaterm H oven, ancillary products and the disposable kits, all developed by BTI Biotechnology Institute.



AUXILIARY PRODUCTS



The use of this system of components and PRGF-ENDORET® technology is decisive for obtaining plasma rich in growth factors with the right biochemical composition.

ADVANTAGES OF THE ENDORET TECHNIQUE:

- Fast preparation and application; only a few minutes depending on the required formulation.
- Functional and safe kit for both the patient and the healthcare professional. All the equipment and devices used for the technique are certified for such use.

Each PRP is different, and its effectiveness in repair tissue depends on the protocol followed and the components used in its production.

The effectiveness of PRGF-ENDORET® technology has been demonstrated in more than 200 in vivo, in vitro and clinical studies.

MAXIMUM QUALITY AND HEALTH WARRANTY

PRGF-ENDORET® system components are manufactured from biocompatible materials, they have undergone extensive quality controls (control of endotoxins, sterility, etc.), and meet all requirements applicable to medical devices for clinical use established by the competent healthcare authorities.

The components of the PRGF-ENDORET® system are manufactured according to ISO 13485 and MDSAP standards and meet the requirements of the European Medical Device Regulations MDD 93/42 and MDR 2017/745.

Are all PRP systems the same?

NO, for several reasons:

- *Not all have proven their therapeutic efficacy*
- *Not all have the suitable CE grade for clinical use*
- *Not everyone has defined a specific protocol for obtaining plasma*





The KMU15 contains 10 packs for individual treatments

1.

CONTENTS
OF THE PACK

BLOOD EXTRACTION SYSTEM

- 4 extraction tubes
- 1 blood extraction butterfly
- 5 ID labels

Extraction tubes



Blood extraction butterfly



ID labels

2.

FRACTIONING SYSTEM

- 3 fractioning tubes
- 1 PTD2 (Plasma Transfer Device)
- 4 needles (14G)

Fractioning tubes



PTD2



14G needles



3.

ACTIVATION SYSTEM

- 1 activation ampoule (Calcium chloride)
- 1 activation syringe (BD Micro-Fine 0.5ml)

Activation ampoule



Activation syringe





KMU15 PLUS

Dental

PRGF-ENDORET®



The KMU15-PLUS KIT contains 10 packs for individual treatments

1.

CONTENTS OF THE PACK

BLOOD EXTRACTION SYSTEM

- 8 extraction tubes
- 1 blood extraction butterfly
- 5 ID labels

Extraction tubes



Blood extraction butterfly



ID labels

2.

FRACTIONING SYSTEM

- 4 fractioning tubes
- 1 PTD2 (Plasma Transfer Device)
- 8 needles (14G)

Fractioning tubes



PTD2



14G needles



3.

ACTIVATION SYSTEM

- 2 activation ampoule (Calcium chloride)
- 1 activation syringe (BD Micro-Fine 0.5ml)



Activation ampoule



Activation syringe



KMU16
Dental

PRGF-ENDORET®



The KMU16 KIT contains **15 packs** for individual treatments

CONTENTS

OF THE PACK

1.

BLOOD EXTRACTION SYSTEM

- 4 extraction tubes
- 1 blood extraction butterfly
- 5 ID labels

Extraction tubes



Blood extraction butterfly



ID labels



2.

FRACTIONING SYSTEM

- 3 fractioning tubes
- 1 PTD2 (Plasma Transfer Device)
- 4 needles (14G)

Fractioning tubes



PTD2

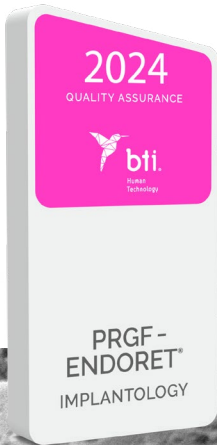


14G needles

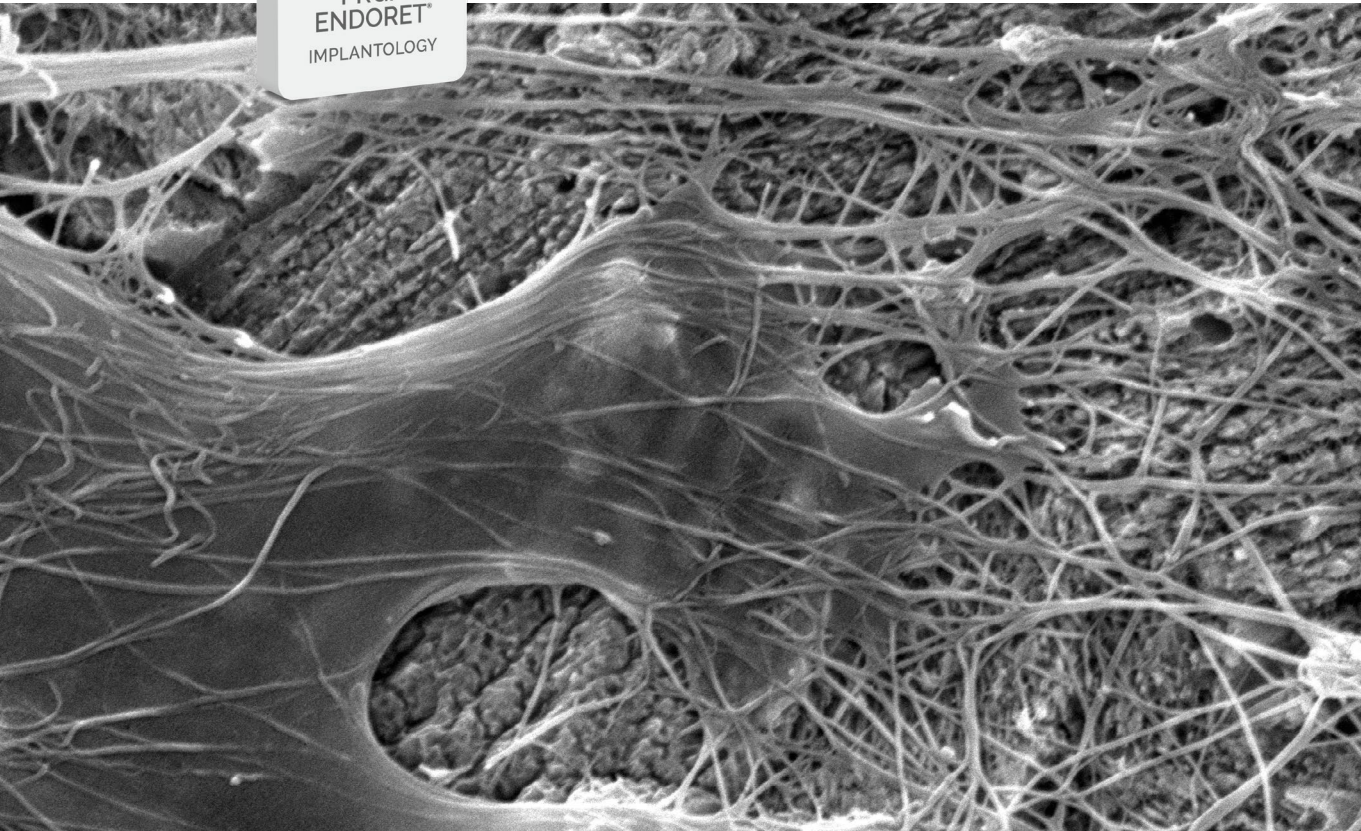


ADDITIONAL GUARANTEES

- BTI certifies its customers' specific training in the use of this technology.



- BTI guarantees the traceability of the materials, and helps transfer all necessary information to the patients.





bti®

Human
Technology

BTI Comercial

San Antonio, 15 - 5º
01005 Vitoria-Gasteiz
(Álava) - SPAIN
Tel: +34 945 140 024
pedidos@bticomercial.com

B.T.I.

Biotechnology Institute S.L.
Parque Tecnológico de Álava
Leonardo da Vinci ,14
01510 Miñano (Álava) SPAIN
bti.implantes@bti-implant.es

Subsidiaries

GERMANY

Tel. +49 (0) 7231 428060
info@bti-implant.de

FRANCE

Tel: (33) 556 18 11 18
info@bti-implant.fr

ITALY

Tel.: (39) 0270605067
info@bti-implant.it

MEXICO

Tel: (52) 55 52502964
bti.mexico@bti-implant.com

PORTUGAL

Tel: (351) 22 120 1373
Fax: (351) 22 120 1311
bti.portugal@bticomercial.com

UK

Tel: +44 (0) 2039 661873
customerservice@bti-implant.co.uk

USA

Cell: 610 209 6040
Office: 866 646 4067
info@bti-implant.us

www.bti-biotechnologyinstitute.com

