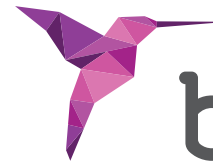


STOP & GUIDE®

Guide surgery



bti®
Human
Technology



STOP & GUIDE®

BTI's new guided surgery

YOUR GUIDE TO SUCCESS

STOP & GUIDE® is more than a system, it is the evolution of guided implantology! Join the revolution and discover how this innovative kit becomes your guide to success.

_VERSATILE
_ACCURATE
_SIMPLIFIED

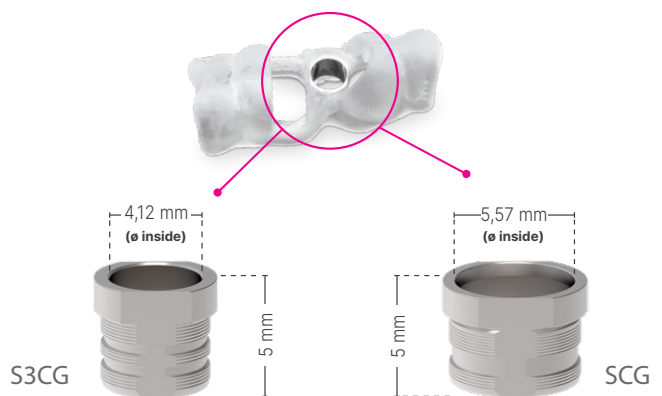
WHAT IS STOP & GUIDE®?

Stop & Guide® is a surgical system for guiding the placement of dental implants in a novel way. It is a versatile system that can be used as a “**drill stop kit**” in conventional (freehand) surgery, or as a “**guided surgery kit**” to perform piloted, semi-guided and fully guided surgery.

WHAT IS NEEDED TO PERFORM GUIDED SURGERY WITH THE STOP & GUIDE® SYSTEM?

To perform any of the 3 types of static guided surgery (**piloted, semi-guided or fully guided**) it is necessary to have:

- A radiographic study of the patient (CBCT) and a scan of the surface of the patient's mouth (stl).
- A surgical guide designed using planning software to include specific S3CG and SCG titanium master sleeves.



- A W&H surgery contra-angle handpiece (WI-75 E/KM), compatible with the connector to which the drivers are attached.
- A Stop & Guide® guided surgery kit, as well as the sequence of drills required for the planned implant dimensions.

STOP & GUIDE® KCG KIT COMPONENTS



_PUNCH DRILL

The punch drill has a diameter of 5 mm for drilling the gingiva. The outer diameter allows for insertion and guidance through the guide sleeves.

FP5



_TESTER

This element attached to the driver facilitates its insertion through the sleeve to check that the initial (smaller diameter) part of the driver passes through completely.

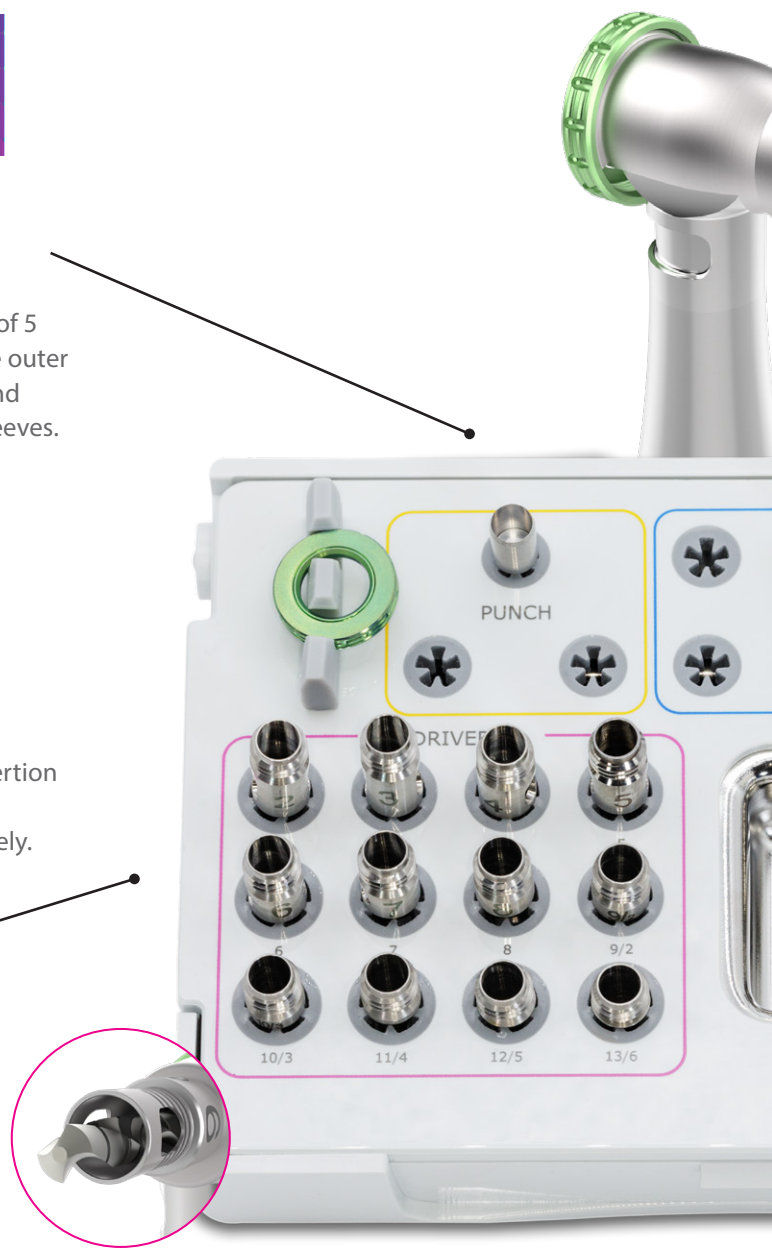
_DRIVERS

Once coupled to the connector of the contra-angle handpiece, they surround the cutters concentrically. The external diameter of the drivers allows them to be inserted and guided, so that **the drills rotate freely inside them, thus avoiding friction** against the guide sleeve.

Compatible with SCG sleeve



External diameter = Ø 5,50 mm. / Internal diameter = Ø 4,80 mm.



When the ridge is not flat or the positioning of the implant is subcrestal, the driver will not stop at the top of the sleeve, and its laser markings (marked every 0.5 mm) will allow estimating the remaining drilling depth for the positioning of the implant. The distance measured with the laser marking in this situation is the distance that should be added to the effective drilling length by selecting a shorter (higher numbered) driver.





_IMPLANT TRANSPORT

Available drivers for different prosthetic platforms:
PCG325* / PCG3* / PCGU*

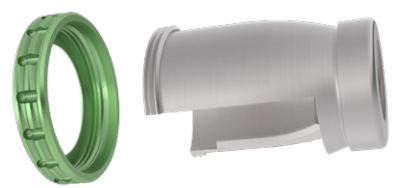
* Not included in the Stop & Guide® KCG Kit,
purchased separately.

_STOP & GUIDE® BOX KCG



DRIVER
CONNECTOR

_CONNECTOR



The connector for the drivers fits over the head of
the W&H contra-angle handpiece (WI-75 E/KM) and
allows the selected driver to be screwed in.

STOP & GUIDE® KIT K3CG PLATFORM 3.0

Components for reduced interdental spaces that make up the new
Stop & Guide® kit for Platform 3.0.

_IMPLANT TRANSPORT 3.0

P3CG325 P3CG3



_PUNCH DRILL 3.0

It has a diameter
of 3.5 mm.

FP335



_DRIVERS 3.0

Compatible with S3CG sleeve



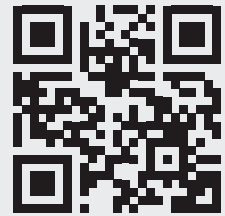
External diameter = Ø 4,07 mm. / Internal diameter = Ø 3,45 mm.



STOP & GUIDE®

BTI's new guided surgery

SCAN THIS QR CODE AND
ACCESS AN EXCLUSIVE
STEP-BY-STEP VIDEO OF
BTI'S GUIDED SURGERY.



5 REASONS

WHY BTI-GUIDED SURGERY GOES FURTHER THAN YOU MIGHT EXPECT

- 1 | VERSATILE**
Adaptable to different guided surgery protocols:
Piloted / Semi-guided / Fully guided
- 2 | INSURANCE**
No friction between drills and guide sleeve,
no overheating and no release of particles
- 3 | SIMPLIFIED**
No specific drills and a very small surgical box
- 4 | ACCURATE**
Full control of drilling depth
- 5 | SIMPLY**
Your conventional **driver-guided** drilling sequence





BTI Comercial

San Antonio, 15 - 5º
01005 Vitoria-Gasteiz
(Álava) · SPAIN
Tel: +34 945 140 024
pedidos@bticomercial.com

B.T.I.

Biotechnology Institute S.L.
Parque Tecnológico de Álava
Leonardo da Vinci ,14
01510 Miñano (Álava) SPAIN
bti.implantes@bti-implant.es

Subsidiaries

GERMANY

Tel. +49 (0) 7231 428060
info@bti-implant.de

PORTUGAL

Tel: (351) 22 120 1373
bti.portugal@bticomercial.com

FRANCE

Tel: (33) 556 18 11 18
info@bti-implant.fr

UK

Tel: (44) 01206580160
info@bti-implant.co.uk

ITALY

Tel.: (39) 0270605067
info@bti-implant.it

USA

Tel: 866-646-4067
info@bti-implant.us

MEXICO

Tel: (52) 55 52502964
bti.mexico@bti-implant.com

www.bti-biotechnologyinstitute.com

NOTE: Check product availability in the different markets with your distributor.